

# General Practice Nursing Opportunities

Gillian Armitage,  
Katy Smyth  
Pathway leads for General Practice Nursing, UCLan

# Relevant documents



- [General Practice Forward View](#)
- [General Practice Nursing in the 21st Century - A time for Opportunity](#)
- [A Ten Point Action Plan for General Practice Nurses](#)
- [District Nursing and General Practice Nursing Services Educational and Career Framework](#)
- [The General Practice Nursing Workforce Development Plan](#)
- [The QNI/QNIS Voluntary Standards for General Practice Nursing Education and Practice](#)
- [RCGP General Practice Nurse Competencies](#)
- [RCGP /RCN Nursing Standards General Practice Nursing Standards](#)

# General Practice Forward View

- Investment in primary care
- Expansion and support for GPs and wider primary care staff
- Develop primary care estate
- Invest in technology
- Major programme of improvement support
- Min £15m investment in GPN support and development



# Recruitment and Retention Issue: An opportunity

- QNI (2015) General Nursing in the 21<sup>st</sup> Century

*MORI research – Implies 8,000 GPNs to leave workforce by 2020.*



General Practice Nursing  
in the 21st Century:  
*A Time Of Opportunity*

# Transition to General Practice Nursing Toolkit

LEARNING RESOURCE / PUBLICATION / TRANSITION

## Transition to General Practice Nursing

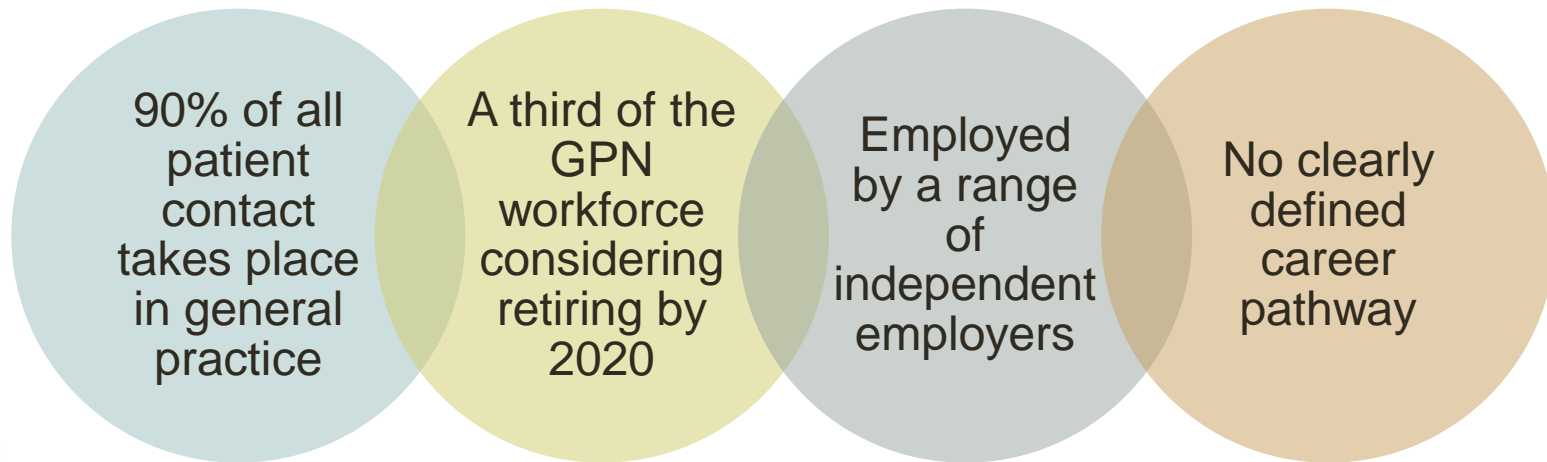
This online resource, updated in 2016, is designed for nurses who are new to a community nursing role.

[Download](#)



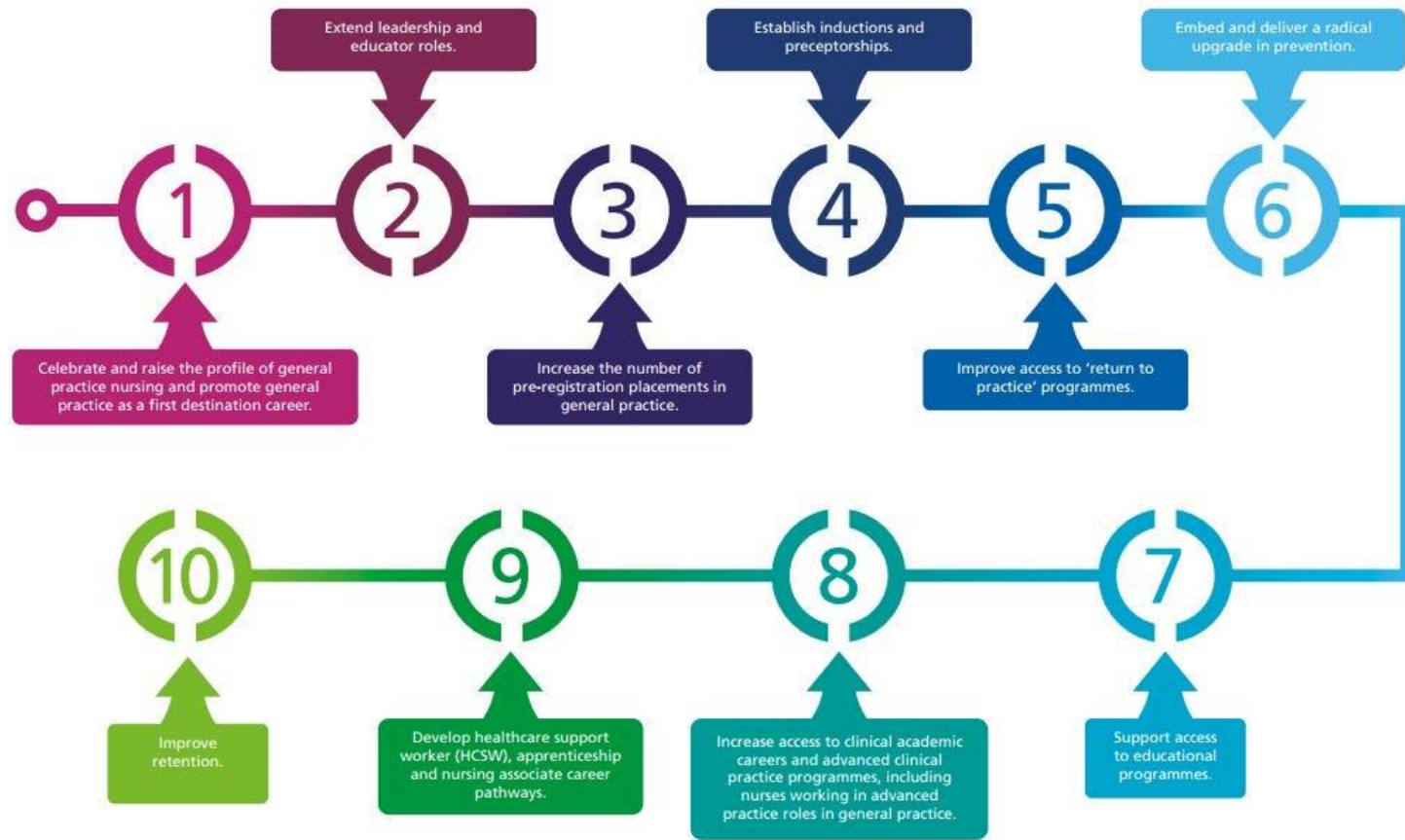
- [Click here for the link to the GPN Resource](#)

# General Practice Nursing: the key challenges



# Rationale

## Ten point action plan



# Workforce Development

Health  
Careers

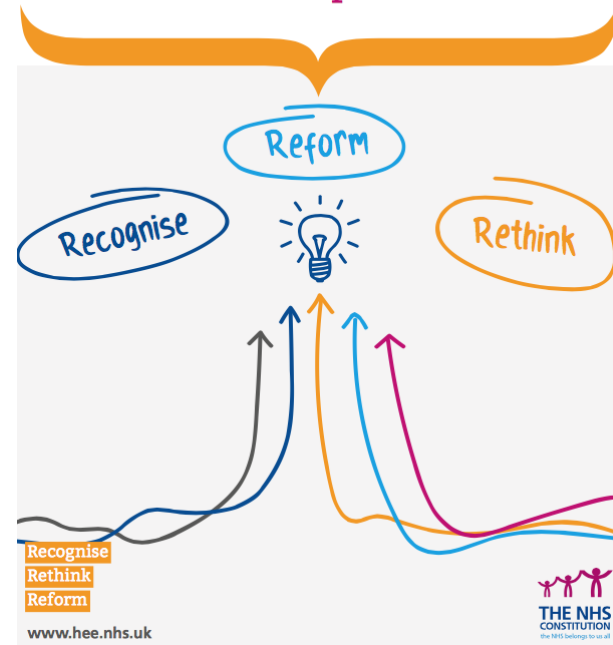
**NHS**  
Health Education England



**District Nursing  
and General Practice  
Nursing Service  
Education and Career  
Framework**

October 2015

## The General Practice Nursing Workforce Development Plan

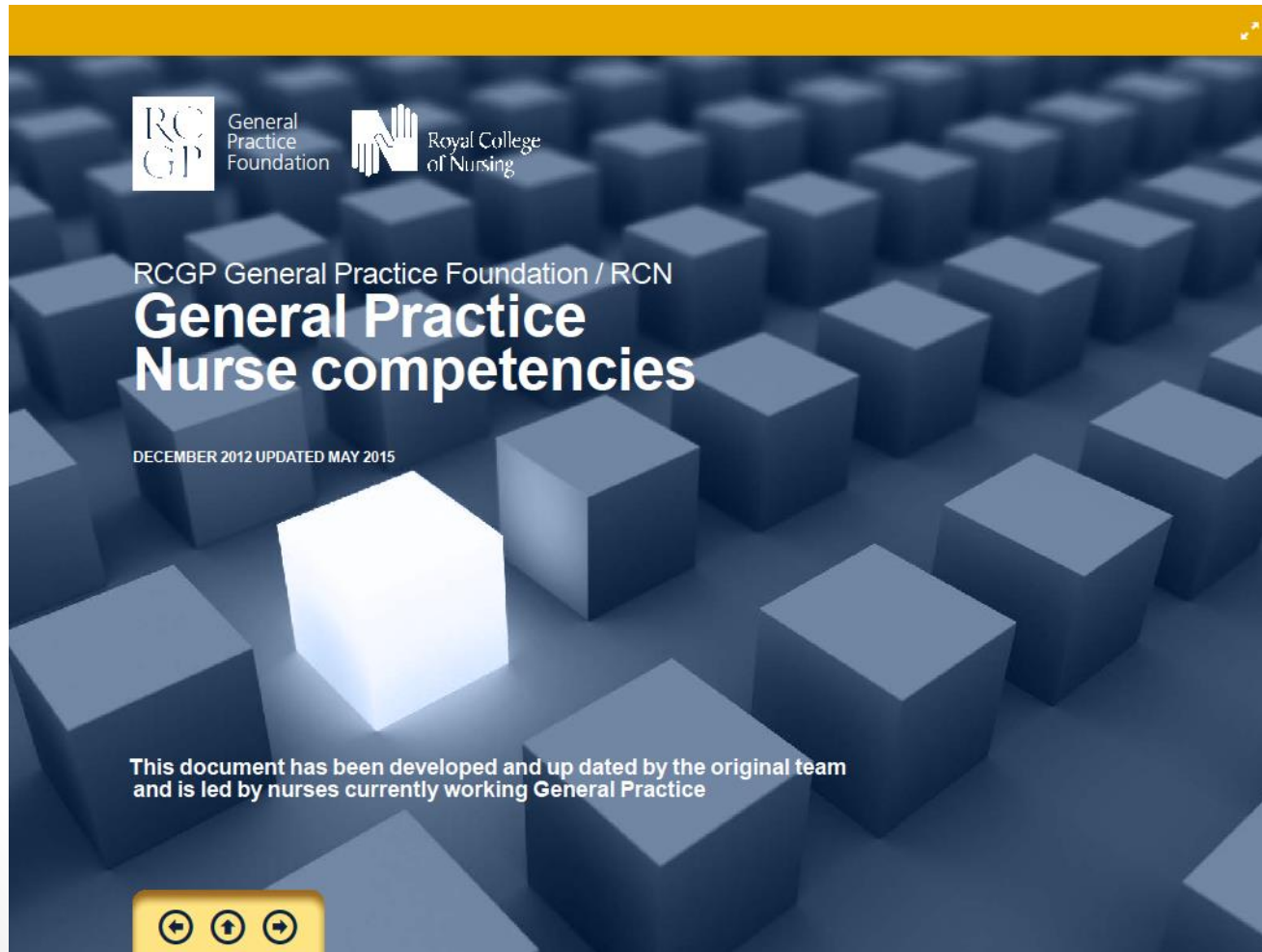




# General Practice Nursing Standards (RCGP/RCN, 2015)

- **Exemplary general practice nurse should:**
- **1.** Ensure that they have the required clinical and behavioural competencies to perform their role to a high standard utilising RCGP GPN Competency frameworks.
- **2.** Work within NMC Code of conduct.
- **3.** Ensure working to NICE, Patient Group Directions or NAPC prescribing guidance.
- **4.** Maintain a 'competence file' which provides an account of what they can and cannot do to meet. Revalidation requirements.
- **5.** Have specific training for running specialist clinics independently (Immunisations, cervical cytology, diabetes, CVD, asthma, COPD, travel, sexual & reproductive health etc.).
- **6.** Have mentorship training and annual updates if involved with training.

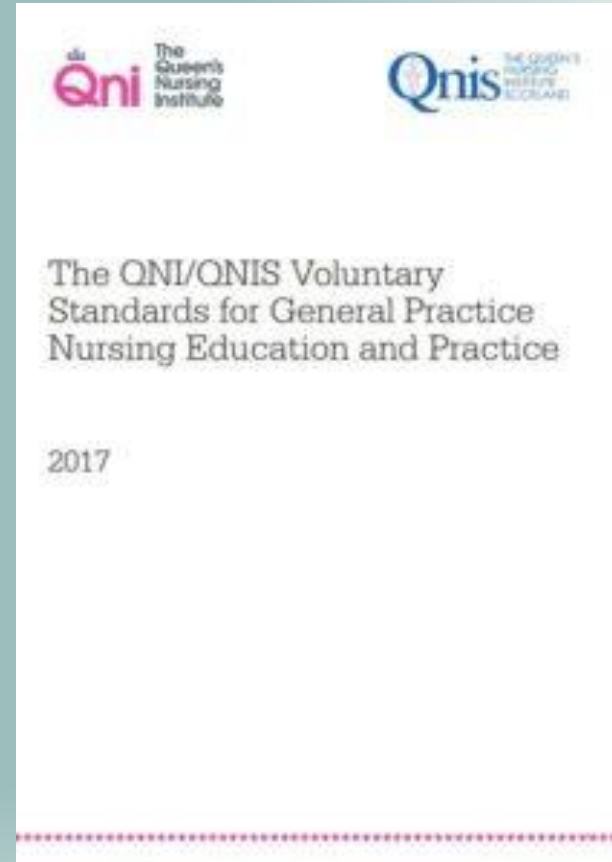
# RCGP (2015) General Practice Nurse Competencies



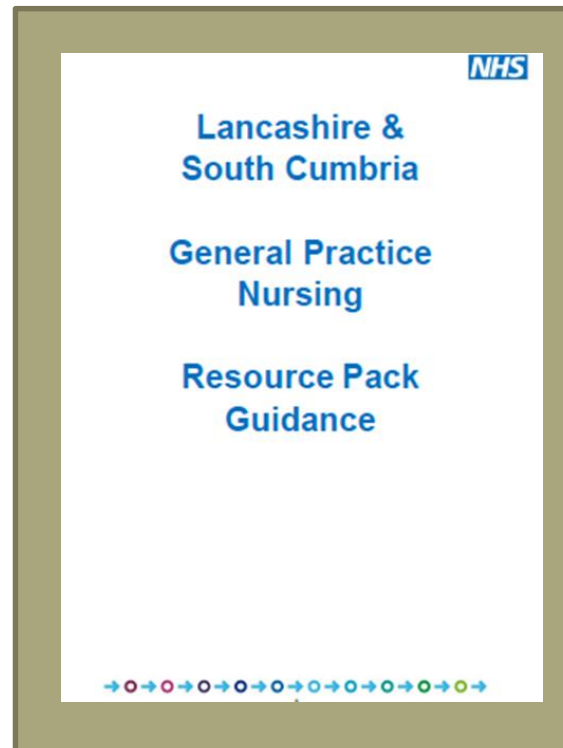
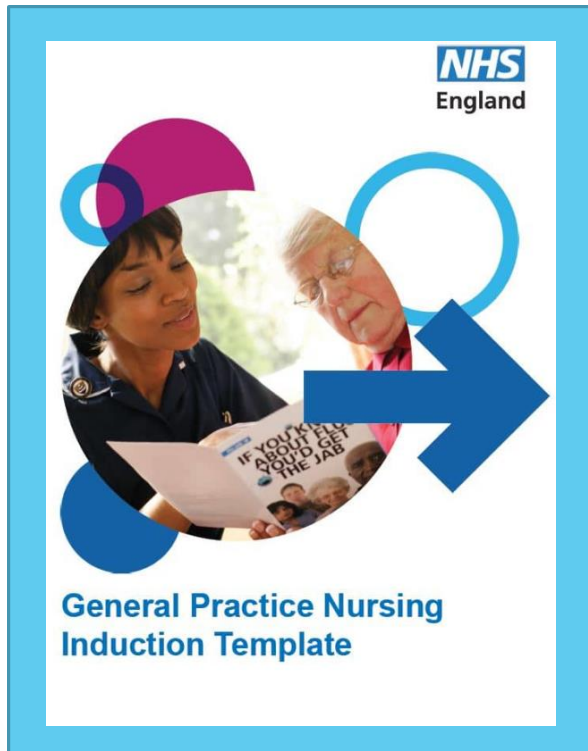
# The QNI/QNIS Voluntary Standards for General Practice Nursing Education and Practice

## Four key domains

- 1. Clinical Care
- 2. Leadership and Management
- 3. Facilitation of Learning
- 4. Evidence, Research and Development

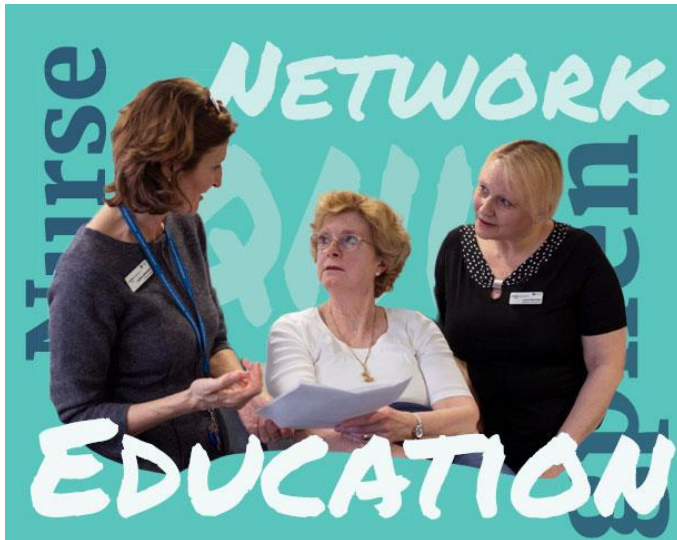


# GPN Induction Template



# GPN Education Network

- General Practice Nurse Education Network



Where possible nurses should seek courses or modules that cover the essential knowledge and skills required to work in the general practice setting and the RCGP GPN competency framework (2015) can be used to develop core skills and competencies.

# Educational Opportunities at UCLan

- Return to Practice Programme for General Practice Nursing
- Preparation Practice Supervisor (2 day workshop)
- Practice Assessor (1 day workshop)
- 2 hour mentor updates for those GPN's who already hold a mentorship qualification
- Fundamentals in General Practice 1
- Fundamentals in General Practice 2
- BSc (Hons ) / MSc Nursing in General Practice
- MSc Advanced Clinical Practice
- Stand alone modules related to general practice i.e. Non-Medical Prescribing, Long Term Conditions / Asthma and COPD / Management of Same Day Consultation



# Return to Practice - General Practice Nurse Programme

Current RTP module plus  
RCGP (2015) competencies  
assessed in clinical practice

10 (level 6)  
credit 'Fundamentals in  
General Practice (1)'

Add 10 (level 6) and / or 20  
(level 6 & 7) credits  
'Fundamentals in General  
Practice (2)'

# Two New General Practice Nurse Modules linked to the RCGP competencies



- **Fundamentals in General Practice 1 Level 6 (10 credits)**

The aim of this module is to enable nurses to obtain knowledge of working in general practice and to prepare them for role development to meet the ever changing needs of primary health care. The nurse will critically examine the ways of working in general practice thus promoting an adaptable and responsive nurse who promotes the highest standards of client care.

- **Fundamentals in General Practice 2 Level 6 & 7 (20 credits)**

This module aims to prepare nurses to develop knowledge and skills which will enable them meet the needs of current challenges facing general practice, utilising nationally recognised frameworks. It aims to enhance nurses' existing expertise and develop new areas of competence in support of their professional development.

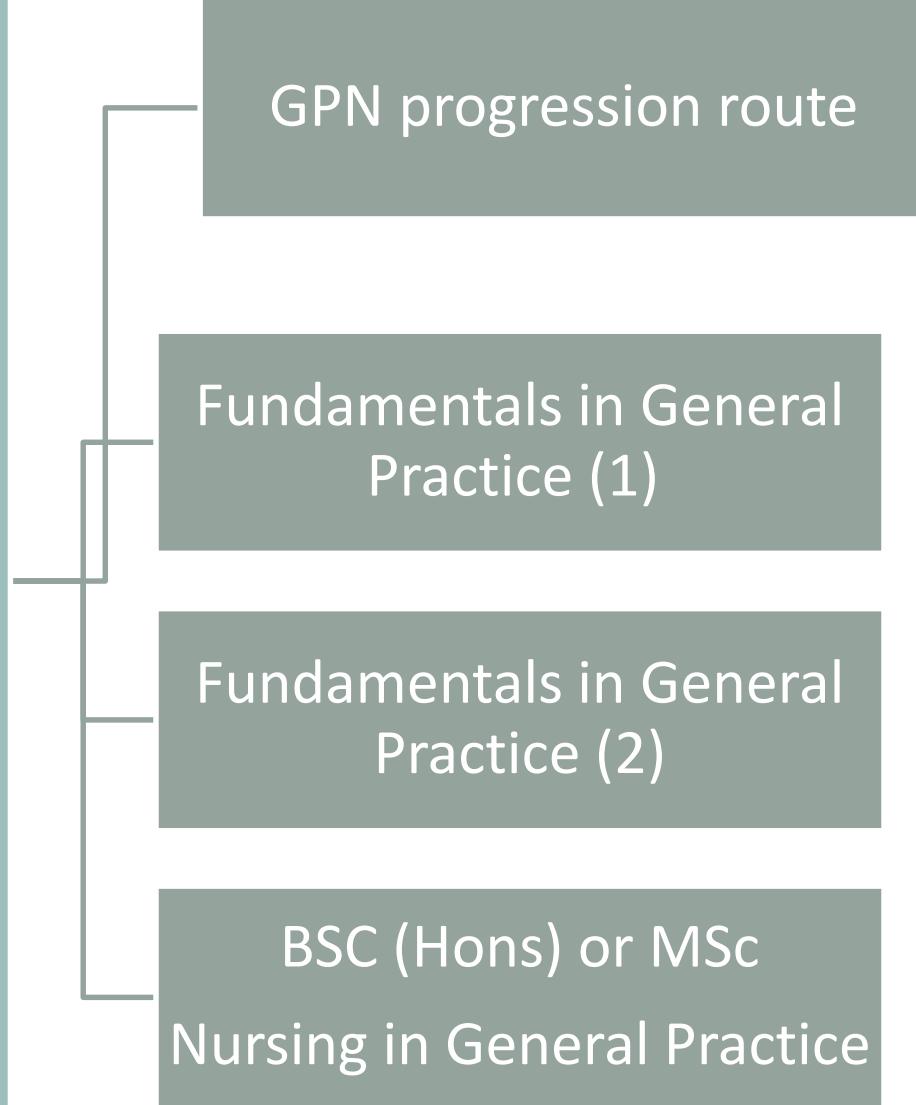


# BSc (Hons) & MSc Nursing in General Practice

- **BSc (Hons)**
- Top up degree - 120 credits
- Core L6 module 20 credits 'Fundamentals in General Practice 2'
- Plus 100 credits of option modules
  
- **MSC**
- 180 credits
- Core L7 module 20 credits 'Fundamentals in General Practice 2'
- Research module
- Triple dissertation
  
- **Post Graduate Certificate = 60 credits**
- **Post Grad Diploma = 120 credits**



# RCGP Competencies



# MSc Advanced Clinical Practice (plus apprenticeship route Advanced Clinical Practitioner)

- A Masters degree that supports Advanced Clinical Practitioner role development (HEE 2017) and apprenticeship standards.
- A part-time course, HEE funded students normally completed the course in 2 years. Students funded by other routes may take up to 5 years to complete.
- Available to registered / regulated health care professionals (NMC or HCPC)
- Based on an identified service need/demand
- On successful completion of this course you will be equipped to assume a role as an Advanced Clinical Practitioner in the provision of high quality evidence-based health care

Normally a first degree (2:2 class or above)  
Practice supporter

# The way forward?



# References



NHS England (2016) General Practice Forward View

QNI (2015) General Nursing in the 21<sup>st</sup> Century

Health Education England. (2015). *District nursing and general practice nursing service education and career framework*. London: Health Education England

Health Education England. (2017). *The general practice nursing workforce development plan*. London: Health Education England

NHS England. (2016). *General practice forward view*.  
<https://www.england.nhs.uk/gp/gpfv/>

RCGP / RCN. (2015). *General practice nurse competencies* \\ha-011\pers-K\0003988E\Downloads\RCGP-General-Practice-Nurse-competencies-2015.pdf

NHS England. (2017). *General practice – Developing confidence, capability and capacity: The 10 point plan sets out actions to deliver general practice nursing workforce for the future*.

<https://www.england.nhs.uk/2017/07/10-point-plan-sets-out-actions-to-deliver-general-practice-nursing-workforce-for-the-future/>